

Application Report - No.107

Drilling Rig

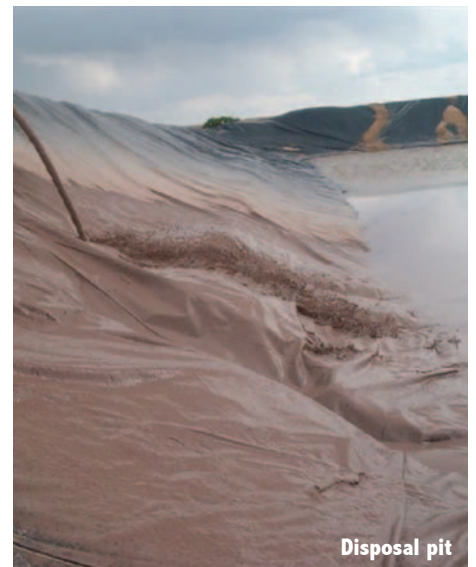


Rig pit behind pump

This application required a combination of a Selwood HS150C submersible pump, hydraulically driven by a Selwood HSP35 and a Selwood D150 high pressure booster pump, to be able to achieve the flow and head required to push the heavy drilling mud 2,700ft from the rig pit to the disposal pit, through a 4" line.

This is a critical application as, unless the rig pit is pumped out, the rig can not continue to drill. This is a financial necessity as all the rigs are rented by the day - working or not!

The HS150C hydraulic pump and the D150 diesel driven pump were put in series and applied to the job, with a manifold to allow one line to recirculate the rig pit and one to carry the mud to the disposal pit.



Disposal pit



	HS150C	D150
Power Requirement		38hp
Pump Speed		2000rpm
Capacity - US Gallons	1350gpm	1672gpm
Suction Lift	-	30ft
Max. Solids Size	2in	1 3/4in
Air Handling	-	50ft ³ /min
Inlet / Outlet Port	6in	6in
Delivery Head	93 1/2ft	133ft



HEAD OFFICE
Selwood Group Limited
Bournemouth Road, Chandler's Ford
Hampshire SO53 3ZL UK

www.selwoodpumps.com

