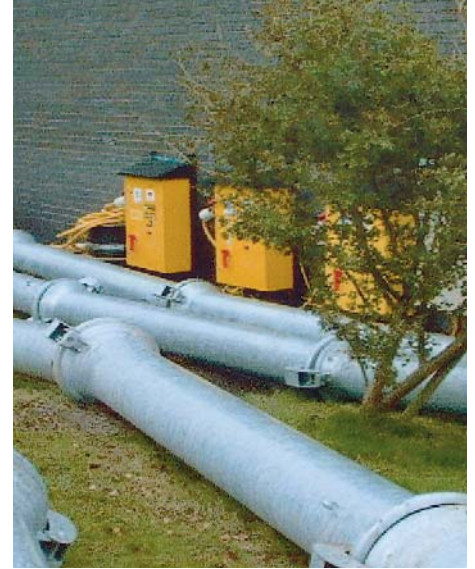


Application Report - No.12

Overpumping



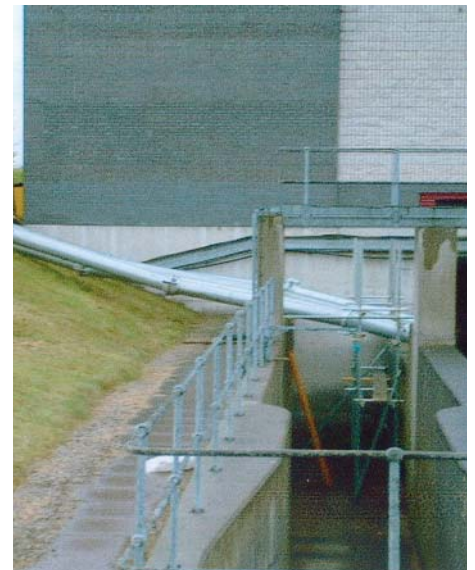
Work had to be undertaken by KMI Water for United Utilities to rebuild an existing inlet so that new sewage screens could be constructed. The requirement was for the overpumping of 1500 litres a second of raw effluent.

Four CS3300LT pumps were used, each delivering a flow of 400 litres per second, giving an overall total of 1600 litres; well above the flow needed.

The power was supplied by a 320 kva generator with a second acting as a duty standby. All equipment was installed by Selwood personnel.

The equipment was not only able to cope with the flows but also allowed the contractor to complete their work on schedule due to its reliability.

The CS3300LT pumps that were chosen for the application gave significantly higher flow rates than our competitors range of pumps, meaning fewer were required which in turn meant less room was required for the installation.



CS3300LT

Power Requirement	37kW
Pump Speed	8 pole
Running Amps	77amps
Flow	400 l/sec
Delivery Head	20m
Height	1920mm
Width	1500mm
Weight	1045kg



HEAD OFFICE
Selwood Group Limited
Bournemouth Road
Chandler's Ford
Hampshire SO53 3ZL

